

W&H PEACOCK
AUCTIONEERS & VALUERS

Antique Furniture, Collectors' Items,
& Collectable Toys

VIEWING

Friday 26th April, 9am to 8pm

Saturday 27th April, 9am to 1pm

Thursday 2nd May, 9am to 5pm

Morning of sale from 9am to 10:30am

AUCTION

Friday 3rd May

Commencing at 10.30am

CATALOGUE

Available online at

www.peacockauction.co.uk

INFORMATION FOR BUYERS

BUYER BEWARE

All lots in this sale are 'sold as seen' with any imperfections, faults or losses. No warranties are given. Bidders are deemed to be satisfied with the condition of any lots on which they bid.

CONDITION REPORTS

We regret that we are unable to process requests for reports received after 1.00pm on the day preceding the sale.

BUYERS PREMIUM

Buyers Premium at 17.5% plus VAT will be added to the bid price of each lot except lots purchased via the-saleroom.com which will be charged at 22.5% plus VAT.

PAYMENT

Accounts must be settled on the day of sale.

Payment can be made by either:

- Cash
- Debit card holder present payments.

We do not accept payments by credit card.

Payment by debit card is accepted without surcharge.

- Bank transfer into our account

Bank Name : Metro Bank Plc
Account Name : W&H Peacock
Sort code : 23-05-80
Account # : 29033862

Please quote both the auction number and your invoice number as reference.

COLLECTION

On sale day until 5pm and on the following Saturday, Monday and Tuesday 9am to 5pm.

The auctioneers may charge storage on items not cleared by this time.

DELIVERY SERVICE

Clients requiring delivery of furniture should enquire at the office.

POSTAGE & PACKING

Should you require items packed and posted please contact the Peacock Post team from Monday to Wednesday on 01234 608908 or shipping@peacockauction.co.uk

ONLINE REGISTRATION

In completing the online bidder registration you:

I. Confirm that you have sufficient funds to complete any purchases,

II. Agree to abide by the auctioneer's conditions of sale and terms and conditions,

III. Agree to make payment by the methods and timescales stated above.

IV. Understand that failure to make payment and to collect your purchases will lead to your accounts with the-saleroom.com and W&H Peacock being blocked, and that you will be liable for any expenses or losses incurred by the auctioneers.

COMMISSION BIDS

Purchasers may leave written instructions to bid with the auctioneers by email or telephone. Please note you must be registered in order to leave commission bids.

CLIENT REGISTRATION

We register all buyers and sellers with a permanent client number that can be used to buy or sell at our sales.

To register there is a £5 charge and we require proof of identity and address such as a photographic driver's licence and a recent utility bill.

ARTIST RESALE RIGHT *ARR 2006

Certain picture lots in this sale may attract royalties under 'Artist Resale Right' legislation. Prospective purchasers must satisfy themselves as to whether or not a royalty payment applies to lots they are intending to buy. Where ARR royalties apply the buyer agrees to pay the auctioneer an amount equal to the resale royalty and we undertake to the buyer to pay this sum to the artist's collection agent.

Please enquire for further information.

GLOSSARY OF TERMS OF WORKS OF ART

Terms used in this catalogue have the following meanings.

Please note that all statements in this catalogue, regarding authorship, attribution, origin, date, age, provenance and condition are statements of opinion and are not treated as a statement of fact.

1. A N ARTIST

In our opinion, the work is by the artist.

2. ATTRIBUTED TO A N ARTIST

In our opinion, the work is of the period of the artist which may be whole or in part the work of the artist.

3. STUDIO, (CIRCLE OR WORKSHOP) OF A N ARTIST

In our opinion, the work is of the period and closely relates to his style.

4. SCHOOL OF A N ARTIST

In our opinion, the work is by a pupil or a follower of the artist.

5. MANNER OF A N ARTIST

In our opinion, the work is in the style of the artist and is of a later period.

6. AFTER A N ARTIST

In our opinion, this work is a copy of the artist.

7. ASCRIBED TO A N ARTIST

In our opinion, this work is not by the artist, however, previous scholarship has noted this to be a work by the artist.

8. SIGNED (OR DATED)

The work has a signature (or date) which is in our opinion is genuine.

9. BEARS SIGNATURE (OR DATE)

The work has a signature (or date) which in our opinion is not authentic.

ONLINE BIDDING IS
AVAILABLE VIA

the saleroom
The home of art & antiques auctions

W&H PEACOCK

AUCTIONEERS & VALUERS

CONDITIONS OF SALE

Affecting purchasers and others attending the sale premises.

1. Purchasers will be deemed:
 - a) To have inspected their lots prior to the sale; and
 - b) To have accepted that lots are sold with all faults and imperfections specifically mentioned or not irrespective of whether they bid in person, by commission, online or through an agent.
2. All goods are second hand and sold without warranty unless otherwise stated in the sale catalogue or by the auctioneer from the rostrum. Any implied warranty, condition or other term is excluded except where to do so would be unlawful.
3. The auctioneers undertake that care has been taken to see that catalogue descriptions are accurate and reliable however these are matters of opinion only and shall not be taken to be statements of fact.
4. The auctioneers act as agents to the vendor and shall not incur liability to any purchaser for any statement, representation or warranty as to title, quality or otherwise of any lot made on behalf of and with the vendor's authority. Likewise the auctioneers shall incur no liability to a purchaser arising from any defect in goods sold save in the event of negligence on the part of the auctioneers or their employees. Any liability therefore shall be a matter for dispute between purchaser and vendor only.
5. The auctioneers reserve on behalf of themselves and the vendors the following rights:
 - a) To sell subject to a reserve price
 - b) To bid on behalf of a vendor and/or purchasers
 - c) To refuse any bid
 - d) To rearrange, consolidate, divide, add or withdraw any lots or vary the order of the sale.
 - e) To exclude any person from the premises if there be good reason to do so.
6. The auctioneer shall regulate the bidding and shall determine from time to time the appropriate increment needed to advance the bidding.
7. The person making the highest accepted bid shall be the purchaser as defined in these conditions.
8. If a dispute arises as to any bidding then at the discretion of the auctioneer either:
 - a) The lot to which the disputed bid relates shall immediately be offered again, or
 - b) The auctioneer shall determine the dispute and his decision shall be final and binding on all parties
9. a) At the fall of the hammer the purchaser is required to give their Client Registration Number. If they have bid on behalf of another person or company they should make this clear to the auctioneer at the time. If they fail to do so then they will be held personally liable for the purchase under the terms of these conditions.
 - b) If, and as required by the auctioneer at the fall of the hammer, the purchaser shall pay to the auctioneer all or part of the purchase price plus VAT and buyers' premium.
 - c) Any such payment made at the fall of the hammer may be treated, at the auctioneers' discretion, as a general deposit against all purchases, made by that purchaser on the day.
 - d) All lots must be paid for in cash, or in other manner acceptable to the auctioneers, on the day of sale and before delivery is given.
 - e) Failure by the purchaser to comply with sub clause a) and b) shall entitle the auctioneer to cancel the sale and, at his discretion, to immediately re-offer the lot in question for sale by auction.
10. No transfer of lots or sub-sale by any purchaser is recognised by the auctioneers. Purchasers shall remain liable under these conditions in respect of their own purchase under the hammer.
11. Private treaty sales shall be subject to these conditions of sale where applicable.
12. All lots will be at the purchaser's risk from the fall of the hammer. Purchasers are therefore advised to check that they have adequate insurance cover.
13. Purchasers will not normally be permitted to remove goods until their payment has cleared through the bank. Whether removal is permitted or not, ownership of goods will not be deemed to pass to the purchaser until their payment has cleared.
14. All lots must be cleared from the sale premises at the purchaser's expense by the time stipulated or agreed by the auctioneers.
15. a) If a purchaser fails to comply with any of the preceding conditions the auctioneers may cause the lot in respect of which the failure is made to be resold by public or private sale without warranty or reserve and without notice to the purchaser.
 - b) If upon resale a lower price is obtained for any lot than was obtained on the first sale, the difference in price together with all costs and charges attending the resale shall be a debt due from the purchaser in default at the first sale.
 - c) Alternatively the auctioneers may, at their discretion, store the lot and recover reasonable charges for so doing from the purchaser.
16. All Sales shall be deemed to have been made in England and the Parties to the Sale hereby submit to the jurisdiction of the English Courts. English Law shall be the proper law of the Contract of Sale.

W&H PEACOCK

AUCTIONEERS & VALUERS

Bedford Auction Centre
Eastcotts Park
Bedford MK42 0PE

+44 (0) 1234 266 366
www.peacockauction.co.uk

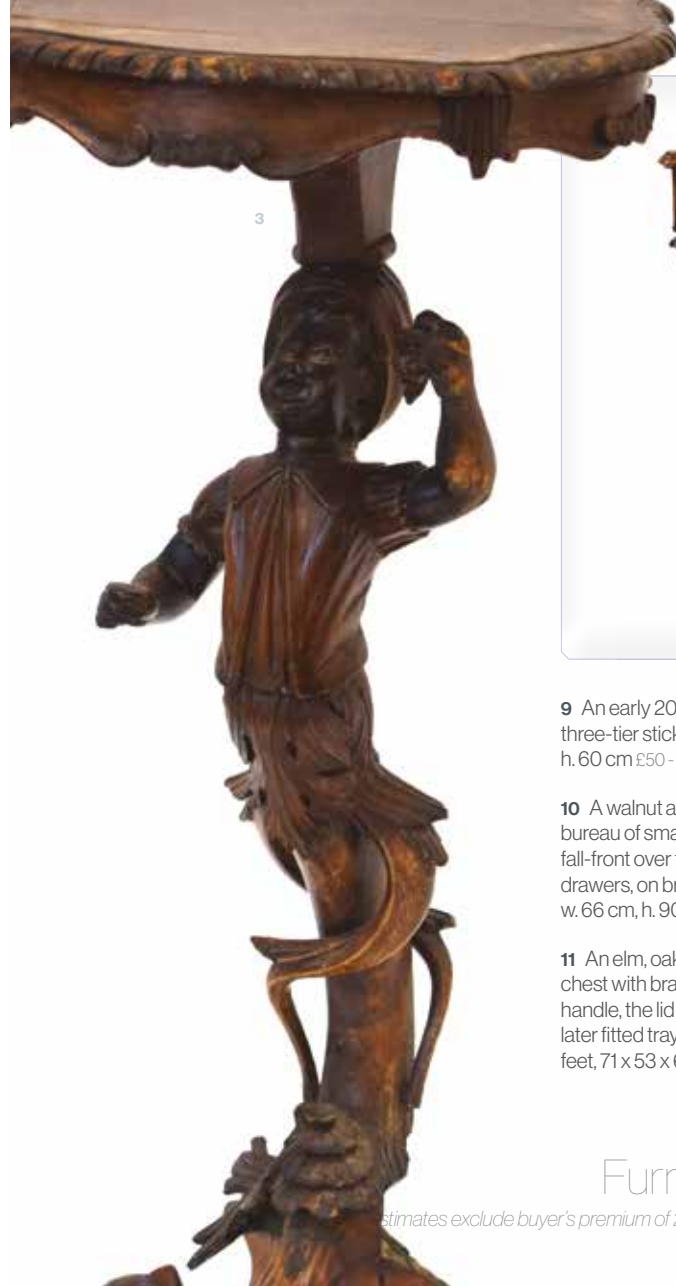
6

Auction Details
May 2024 | Antique Furniture & Collectors' Items



Furniture &
Works of Art





1 An oak clerk's desk, the sloped surface enclosing six drawers, on a later oak stand, 68 x 52 x 91 cm
£100 - £150

2 A late 19th century Irish(?) occasional table, the marquetry surface shaped as a clover leaf and mounted on an Edwardian base, w. 53 cm, h. 73 cm £50 - £70

3 A Venetian-type occasional/wine table, the figural column modelled as a 'Blackamoor' on a tripod base, di. 32 cm, h. 77 cm £60 - £80

4 A late 19th/early 20th century marquetry table, the square surface in a floral pattern, on square tapering legs, 60 x 60 x 61 cm
£40 - £60

5 A Victorian mahogany sewing or hobby table, the folding surface over two frieze drawers, on turned legs with castors, 36 x 52 x 71 cm
£50 - £80

6 A 19th century burr walnut and 'scumbled' card table, the folding surface over a plain frieze on shape supports joined by a cross stretcher, 80 x 41 x 76 cm. £30 - £50

7 A set of 19th century brass and mahogany scales by 'De Grave Short & Fanner' £30 - £50

8 An 18th century oak dough bin on tapering supports joined by stretchers, 102 x 43 x 75 cm
£80 - £120

9 An early 20th century oak three-tier stick stand, w. 74 cm, h. 60 cm £50 - £70

10 A walnut and feather banded bureau of small proportions, the fall-front over four long graduated drawers, on bracket feet, w. 66 cm, h. 90 cm £100 - £150

11 An elm, oak and walnut silver chest with brass mounts and handle, the lid opening to reveal a later fitted tray, on block bracket feet, 71 x 53 x 61 cm £150 - £200

12 A pair of Thomas Hudson 'Cowman' elm and rush seated shaker-type armchairs, each with a cow signature to the reverse
£60 - £100

13 A Victorian figured walnut sewing table, the lid enclosing a maple lined interior with detachable tray, over a single 'basket', on lyre-shaped supports joined by a cross stretcher, on castors, 56 x 40 x 70 cm
£80 - £120



14 A 19th century Anglo-Indian (?) padouk side cabinet, the intricately carved back over a bow-front and matching door, flanked by figural pilasters, on claw feet, w. 87, h. 109 cm £300 - £500



31

15 An 18th century oak coffer of long proportions, the four-panelled surface over two later carved front panels, on square straight stiles, vacant interior, 144 x 58 x 61 cm £80 - £120

16 A 19th century mahogany and satinwood banded toilet mirror £20 - £30

17 A giltwood wall mirror, the rectangular plate within a foliate frame, 107 x 76 cm £100 - £150



33

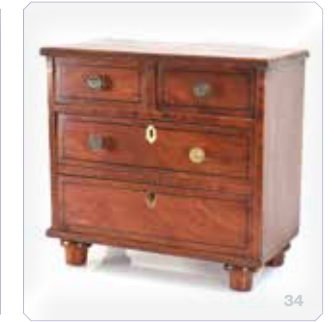


32

18 A 19th century giltwood wall mirror in the French style, the rectangular plate flanked by a pair of pilaster columns below a black frieze, 58 x 33 cm £30 - £40

19 A Victorian figured walnut and marquetry games table on four turned columns and splayed legs with castors, 91 x 47 cm £60 - £80

20-30 Spare Lots



34

31 A miniature apprentice model of a mahogany tilt-top supper table, di. 28 cm, h. 18 cm £60 - £80

32 A miniature apprentice model of an oak dresser, with a lift lid, w. 24 cm, h. 14 cm £40 - £60

33 A miniature apprentice model of a coal scuttle with painted decoration, h. 13 cm £40 - £60

34 An apprentice chest of two short over two long drawers, 29 x 15 x 27 cm £60 - £80



36



41



43



46

35 An apprentice chest of two short over three long graduated drawers, the mahogany body with satinwood crossbanding, on splayed feet, 51 x 20 x 44 cm £60 - £100

37 A 19th century Tunbridge ware and kingwood jewellery box of octagonal casket form, with brass mounts, 19 x 14 x 9 cm £50 - £80

39 A Regency rosewood and brass mounted writing slope, 38 x 27 x 9 cm £40 - £60

40 A George III mahogany writing or artist's box with a brass handle, the interior with a single tray to the side, 29 x 18 x 11 cm £40 - £60

38 A late 19th century mahogany and rosewood crossbanded box with a brass campaign-type handle, 36 x 14 x 8 cm £30 - £50

36 A Georgian tortoise-shell, mother-of-pearl inlaid and ivory mounted caddy of serpentine form, on bun feet, 20 x 13 x 14 cm £100 - £150



43



48

41 A late 18th/early 19th century mahogany and brass mounted box of casket form with bracket feet, the interior with a later partial lining, 24 x 14 x 19 cm £60 - £80

42 A 19th century coromandel and brass mounted desk box with a fitted interior, 33 x 23 x 18 cm £50 - £70

43 A Regency rosewood and brass inlaid jewellery box of sarcophagus form, the fitted interior with a removeable tray, on turned feet, 28 x 22 x 16 cm £60 - £100

44 A 19th century mahogany and satinwood strung tea caddy of sarcophagus form, the interior of the lid constructed of specimen timbers, on bun feet, 33 x 19 x 19 cm £60 - £80

45 A 19th century mahogany and rosewood banded tea caddy, the interior with two detachable cannisters, on turned feet, 35,5 x 20 x 19 cm £80 - £120

46 An Irish 19th century letter tidy of Gothic form, the oak body with brass mounts, the interior with dividers and stamp for 'Mansfield, Dublin', 26 x 15 x 20 cm £80 - £120

47 A George III mahogany box, the interior with three compartments, on brass ball and claw feet, 25 x 15 x 17 cm £40 - £60

48 An early 19th century satinwood, walnut banded and marquetry tea caddy, the interior with two detachable cannisters, 31 x 16 x 16 cm £80 - £120

49 A Victorian mahogany desk tidy, the tambour top enclosing spaces for three inkwells (only one present), over a drawer, 27 x 21 x 13 cm, with a silver pen £60 - £80



56

50 A late 19th century solid yew and banded box, 24 x 25 x 13 cm, together with a faux tortoiseshell box (2) £50 - £80

51 A 19th century yew and walnut banded tea caddy, the interior with two compartments and a central later mixing bowl, 30 x 15 x 14 cm, together with a further similar rosewood caddy (2) £80 - £120

52 Two George III mahogany boxes with brass handles (2) £40 - £60

53 A group of three 19th century tea caddies of sarcophagus form (3) £80 - £120

54 A mid-19th century rosewood tea caddy of sarcophagus form, the interior with two detachable cannisters and a central later mixing bowl, on bun feet, 33 x 18 x 17 cm £50 - £80

55 A group of five various boxes including a walnut and marquetry box, two pen boxes, a draughtsmen box and a yew dressing table box (5) £50 - £80

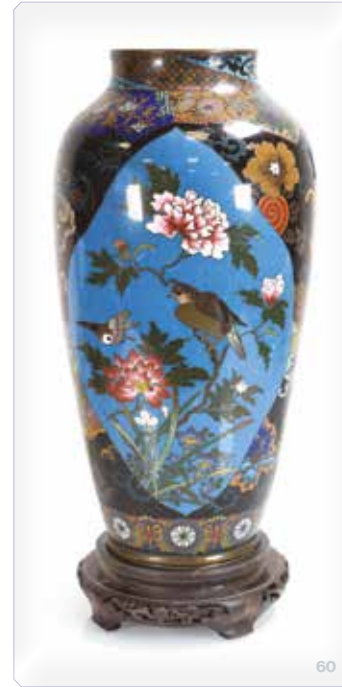
56 A group of three Victorian walnut and marquetry writing slopes (3) £100 - £150

57 A Victorian walnut letter box, the interior with a calendar section over compartments, 38 x 31 x 39 cm £60 - £80

58 A late 19th century Tunbridge and marquetry sliding book slide £50 - £70

59 A late 19th century elm(?) and marquetry pot and cover, di. 13 cm £30 - £50

60 A late 19th century cloisonné two-panelled vase, h. 38 cm, on an associated stand £80 - £120



60

61 A cloisonné bowl decorated with dragons, di. 28 cm, together with another smaller bowl, both on associated stands (2) £60 - £80

62 A group of cloisonné containers (5) £60 - £80

63 A late 19th century cloisonné vase decorated with flowering shrubs and geometric bands, h. 31 cm £50 - £70



61



65

64 A group of cloisonné vases and bowls including a large baluster vase decorated with birds and flowering shrubs on a blue ground (7) £50 - £80

65 A near pair of cloisonné vases of slender form, each decorated with serpents, birds and floral motifs on a famille noir ground, h. 12 cm (2) £40 - £60

66 A Chinese bamboo container and cover together with a mother-of-pearl inlaid lacquered tray, a metalwares pot and cover and a Chinese tray (5) £50 - £70

67 A South East Asian brass bowl relief decorated with figures in a garden landscape, di. 15.5 cm, h. 13 cm, together with another smaller bowl (2) £50 - £70



69



70



73

68 A Kashmiri(?) lacquered bowl, the central panel decorated with a figures at a temple, within a busy landscape scene, di. 37 cm £30 - £40

69 An Oriental cast metal figure modelled as a seated gentleman holding a bird, h. 6.5 cm, together with a group of wooden carvings and stands (Qty) £100 - £150

70 A South East Asian gilt metal figure modelled as the Thai Prince Phra Aphai Mani playing the Zueng, h. 38 cm, w. 26 cm £60 - £80

71 A late 19th/early 20th century Japanese dining trousse set containing a knife, pair of bone chopsticks and toothpick, in a tortoiseshell case £40 - £60

72 A late 19th/early 20th century Japanese dining trousse set containing a knife and pair of bone chopsticks, in a tortoiseshell case with ivory mounts Ivory Submission reference 6GDCZF6Q £40 - £60

73 A brass figure modelled as Shakyamuni Buddha, h. 38 cm, together with a brass and enamelled decorated incense burner and cover (2) £60 - £100



76

74 A Chinese Export panel decorated with figures inlaid with hardstones, 62 x 45 cm, together with three smaller matching panels (4) £80 - £120

75 A group of early 20th century lace and whiteware christening clothing together with two Chinese pouch bags (Qty) £30 - £50

76 A Fijian i-ula tavatava throwing club, the body inlaid with ivory stars and motifs, the handle richly carved with zigzag grips, length 47 cm £300 - £500

77 A Chinese rice scythe £20 - £30

78 A pair of 20th century Chinese reverse-glass paintings together with two silk embroidered landscapes (4) £50 - £80

79 A group of collectables including a desk calendar, a pair of gilt sconces, a pair of brass candlesticks, a miniature Limoges bistro set etc. (Qty) £60 - £100

80 A Chinese carved figure of a bear in the Black Forest manner, w. 30 cm £30 - £50

81 A pair of enamelled plaques depicting courtiers within architectural settings, 50 x 34 cm £80 - £120

82 A large collection of Victorian and later marbles (Qty) £50 - £80

83 A collection of geological specimens including granite, Cornish tin ore, quartz crystal, tourmaline etc., contained in a hexagonal specimen box (Qty) £150 - £200



86



89

84 A group of eight walking sticks and canes including horn and silver mounted examples, together with a single parasol (9) £60 - £100

85 A boxed Jacques Albert Fils saxophone, silver-plated with fittings £40 - £60

86 A late 19th/early 20th century magic lantern together with a large collection of glass slides including night photography, welcome flags, street sounds, British Navy, wheel-turned or adjustable examples etc. (Qty) £300 - £400



91

87 A late Victorian square copper railway lantern with bevelled glass and turned wooden handle, with burner and brass maker's plaque for 'G Polkey C & M 1901 Birmingham', crow's foot markings £120 - £150



92

88 A Thomas Edison standard phonograph with the oak case, tone horn and nine discs, serial 606178 £150 - £200

89 A French 'Le Mignonphone' wind-up portable gramophone with folding horn £150 - £200

90 An anniversary clock, the silvered dial inscribed 'Tempus Fugit', the brass body below a glass dome, h. 32 cm £40 - £60

91 A Victorian clock, the movement stamped 'GR' and striking on a gong, the marble and metalwares mounted body modelled as a tower, h. 55 cm GR gong £100 - £150

92 A Victorian clock, the movement striking on a bell, the black marble case surmounted by a spelter bust of a lady, h. 51 cm £50 - £70



94

93 A German miniature table-clamped sewing machine by Moldacot, No. 123441 £80 - £120

94 A 'Geographia' 10 inch Terrestrial Globe on stand £80 - £120

95 An early 20th century military riding crop together with a carriage crop (2) £80 - £120

96 Two presentation boards holding forty-four bone bobbins including some named examples: Frances, Ann Gardiner 1840, Sarah, Edward, John etc. (44) £100 - £200



98

97 An early-to-mid 20th century alphabetical and biblical sampler embroidered with Psalm 23 by 'Ann Askby Bedford', 41 x 34 cm
£50 - £80

98 A pair of embroideries on printed silk depicting classical figures, images 30 x 25 cm oval (2) £150 - £200

99 Three albums of postcards including traditional street scenes, seaside resorts, humour, greetings, Wreck of the Cromer Express (4), French First World War scenes etc. (3) £80 - £120

100 A photograph of Wernher von Braun, signed in the image with RSC Nospar copyright stamp to the back, framed with four further space related photographs (5) £150 - £200

101 Bruce Bairnsfather (1888-1959), an off-set lithograph depicting 'Last Time' and 'This Time', image 36 x 26 cm £300 - £400



104



106

102 A group of five Grimwades Bruce Bairnsfather jugs and bowls together with 'Bullets & Billets' and 'The Bairnsfather Case' (7) £40 - £60

103 A group of five 'witches balls' in red, gold, blue, green and silver (5) £50 - £70

104 A white parian-type figure modelled as a nude figure washing in a naturalistic setting, h. 85 cm
£150 - £200

105 An Art Deco French ceiling light, the moulded glass shade resting within a cast metal frame and surrounded by smaller hanging lamps, originally from Nice
£300 - £400

106 Regimental Sergeant Major (RSM) Percy Walter Wood MM (1889-1962) Rifle Brigade, No. 906: a group of five medals including 1914 Volunteer Star, British War Medal, Victory Medal (with oak leaf), Military Medal (for bravery in the field) and Long Service & Good Conduct Medal, together with the recipients scrap/photograph album including recruitment, India, Asia Minor, Mention in Despatch, regimental sports, manoeuvres 1925, London Hospital, family photographs, 1930 Hyde Park Parade etc., a copy of 'Rifle Brigade Chronicle' which has a page on RSM Wood, a RB cap badge, The Army Rifle Association medallion and an embroidered patch (Qty)
£600 - £1000

107 A group of Second World War medals including Defence, War, 1939-1945 Star, Italy Star and Africa Star together with a lacquered pen box, a brass Trench Art lighter and a meerschaum and amber pipe (Qty)
£60 - £80

108 A cased Civil Defence Long Service Medal together with a Second World War Defence Medal, a 1951 Festival of Britain crown and a 1937 crown (4) £30 - £40

109 A group of Second World War medals in a box addressed to 'Mrs G.E. Hipgrave 16950' including Defence, War, Pacific Star and 1939-1945 Star together with four cap badges (8) £50 - £70



111

110 A group of medals including First World War Victory & British War Medal awarded to 376401 Pte. MA Mills Durham Light Infantry together with Five and Twenty Years Fire Brigade Union medals, a Second World War medal, a small group of badges and ephemera (Qty) £60 - £80

111 A 19th century French card and paper/manuscript peepshow, or optical toy, circa 1835, the slip cover reading 'No. XI Optique Double des Saisons' £300 - £400

112 A collection of bank notes including Bank of England consecutive £1 one pound (W38M 085903, 085905, 085906 and S44B 042419-21), a Forde five pound, foreign notes etc. (Qty) £80 - £120

113 A group of eighteen match holders and strikers including an 1860 'got to bed' lignum vitae box, two owls, a boot etc. (18) £60 - £80

114 A group of eight brass match holders, some with enamel work, including 'Prince Albert's Safety Box', 'Patent Wax Vestas', Arms of Cambridge, Shakespeare's Birthplace etc. (8) £30 - £40

115 A treen string holder in the form of a barrel printed with 'Glasgow Green & Suspension Bridge' together with three other items of treen (4) £20 - £30

116 A Russian black lacquer box decorated with figures on horseback in a snowy ground, 14.5 x 9.5 x 6 cm £40 - £60

117 A small group of novelty matchboxes, tins and other collectables (Qty) £30 - £40

118 A copper bugle, a brown patinated relief wall plaque, a cast iron figure of a public speaker and a further brass sculpture (4) £30 - £40



116



124

119 A small album of photographs entitled 'With the RNAS during the Great European War' £40 - £60

120 An album of Victorian and later stamps including a Penny Black, numerous Penny Reds etc. £200 - £300

121 A set of four (?) hardstone models of fruit (4) £30 - £40



121



125

122 After Pierre Chenet, a bronze model of a pointer dog, foundry marks, w. 14 cm £30 - £40

123 A resin figural modelled as an Art Deco dancer on a stepped plinth, h. 22 cm £30 - £40

124 A chromed car hood mascot modelled as an eagle with outstretched arms, w. 23 cm £80 - £120

125 A patinated bronze and copper sculpture modelled as a Viking longship with billowing sail, 44 x 10 x 40 cm, on a stand £150 - £200

126 After Josef Lorenzl, a Viennese bronze figure modelled as a nude dancer, the marble base with a Goldscheider tablet plaque, h. 39 cm £150 - £200



128



129



130

127 A collection of 1924 Wembley British Empire Exhibition pieces including tea cannisters, napkin rings, spoons etc. (Qty) £50 - £80

128 A 'Perfect' cricket bat by Stuart Surridge & Co., ink writing below lacquer reading 'Australian Tourists 1934 Bat' with signatures apparently by Don Bradman, Hans Ebeling, Arthur Chipperfield, Ben Barnett, Stan McCabe etc. £50 - £80

129 A French toile relief plaque in the form of a coat of arms, 43 x 34 cm, together with a brass door knocker (2) £80 - £120

130 A polychrome cast metal wall plaque modelled as a coat of arms surmounted by a crown, 40 x 34 cm £100 - £150

131 'Britannia, Volume the Firft or an Illustration of the United Kingdom of England and Dominion of Wales by John Ogilby': a bound set of maps £20 - £40

132 Two albums of 19th century and later stamps, envelopes, post cards and First Day Covers (2) £80 - £120

133 - 150 Spare Lots



Pictures & Prints





152



158

151 William Davies (b. 1928),
'Low Tide at Twickenham',
signed,
oil on canvas,
34.5 x 39.5 cm £80 - £120

152 William Davies (b. 1928),
'Hammersmith Bridge',
signed,
oil on canvas,
34.5 x 39.5 cm £80 - £120

153 William Davies (b. 1928),
Sailing boats at Harbour,
signed,
oil on canvas,
34.5 x 39.5 cm £80 - £120



157

154 William Davies (b. 1928),
'Low Tide at Kew',
signed,
oil on canvas,
34.5 x 39.5 cm £80 - £120

155 William Davies (b. 1928),
'Windsor, September Light',
signed,
oil on canvas,
34.5 x 39.5 cm £80 - £120

156 Ronald Cavalla (b.1940),
'Offshore',
signed,
oil on board,
9 x 13 cm,
together with another work by the
same hand, titled 'Against the Tide'
(2) £40 - £60

157 G. Milone
(late 19th/early 20th century),
A flock of sheep,
signed and dated 1898,
oil on canvas,
60 x 90 cm £80 - £120

158 G. Fiori
(late 19th/early 20th century),
A Venetian view,
signed,
oil on panel,
20 x 15.5 cm,
together with another work by the
same hand, a pair (2) £40 - £60

159 Late 19th/early 20th century
School,
Basket of fruit,
unsigned,
oil on canvas,
16.5 x 21.5 cm,
together with another work by the
same hand, a pair (2) £20 - £30



162

160 English School,
Young girl in Tudor dress,
unsigned,
oil on board,
32.5 x 22 cm £200 - £300

161 A set of four 19th century
hand coloured engravings,
each depicting birds and ducks,
each 34 x 24 cm (4) £40 - £60

162 Attributed to Edward Lear,
a set of four botanical watercolours,
each 23 x 16.5 cm (4) £200 - £300

160



167 (detail)



163 After Peter Scott (1909-1989),
'Common Teal',
signed and numbered 19/29,
limited edition coloured lithograph,
image 20.5 x 14 cm,
together with four further works by the same hand (5)
£80 - £120

164 Edward Walker (1879-1955),
Cattle by a washing line,
signed,
watercolour,
24 x 33.5 cm £100 - £150

165 F. J. Torrome (20th century),
Working horses in a village,
signed and dated 1909,
oil on artists' board,
23.5 x 33.5 cm £80 - £120



166 David Ellis (20th century),
Steam train at a snowy station,
signed and dated '02,
oil on artists' board,
31.5 x 47 cm £40 - £60

167 James Henry C. Millar
(1863-1929),
Sailing boats at sunset,
signed,
oil on canvas,
42.5 x 57.5 cm £200 - £300



168 Stanley Orchart (1920-2005),
Duck on a still pond,
signed,
oil on artists' board,
49 x 59 cm £150 - £200

169 20th century School,
Grey figures in a bustling square,
indistinctly signed,
gouache,
11 x 14.5 cm £30 - £50

170 A. V. (?)Domay, Cattle at a
watering hole,
indistinctly signed,
watercolour,
17 x 23 cm £60 - £100

171 K. Seki (Japanese),
Stream at autumn,
signed,
watercolour,
29.5 x 44 cm,
together with another work by the
same hand, a pair (2) £80 - £120



172 Ponticelli (Italian School),
Mountainous landscape,
signed,
oil on canvas,
28 x 38 cm £30 - £50



173 Frederick James Aldridge
(1850-1933),
'Trader Entering Port',
signed and dated '97,
watercolour,
48 x 73.5 cm £100 - £150



174 John Farquharson
(20th century),
Horses and figures on a sunny
beach,
signed,
watercolour,
29 x 44 cm £30 - £50



175 Roland Hill (20th century)
'Murlough Bay, Co. Antrim',
signed and dated 1937,
watercolour,
19.5 x 37 cm,
together with another work by the same hand, a pair (2)
£50 - £80

176 Late 19th/early 20th century School,
A three master by moonlight,
unsigned,
oil on canvas,
19.5 x 35 cm £150 - £200



177 After William Lionel Wyllie
(1851-1931),
'Greenwich',
signed in pencil,
etching,
image 12 x 32.5 cm,
together with another work by the same hand, a pair (2)
£200 - £300



178 Barbara Lavallee (Contemporary), 'Ice Fishing', signed and inscribed, coloured reproduction, image 7.5 x 23 cm £20 - £30

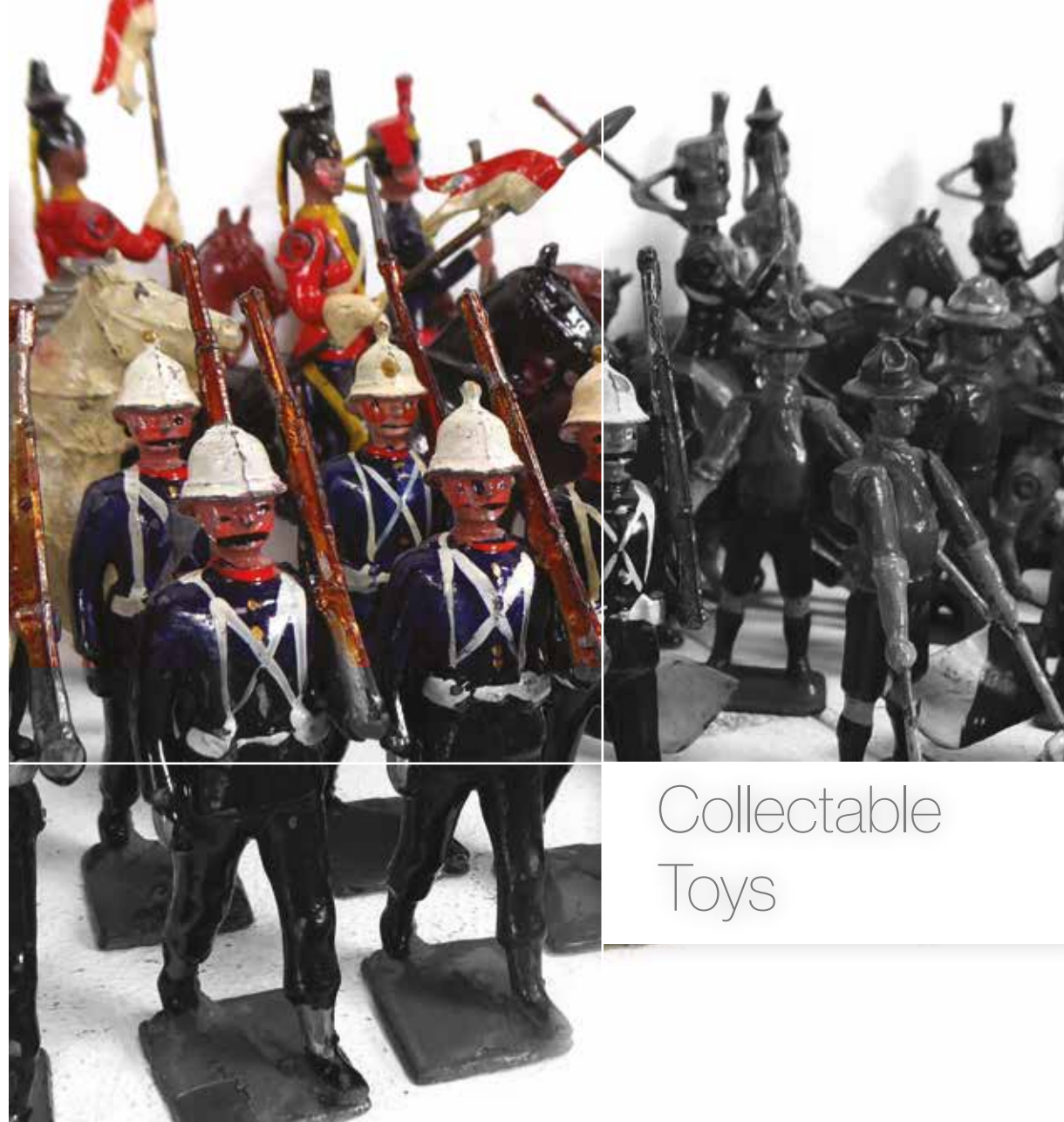
179 English School, late 19th/early 20th century, A spaniel and its catch, indistinctly signed, oil on canvas, 49.5 x 59.5 cm £200 - £300



180 English School, 19th century, Figures in a bustling village, indistinctly signed, pen and ink, image 16 x 27.5 cm, together with two similar works (3) *From the Estate of Phillip Allen £60 - £100

181 Charles Thomas (20th century), 'Interior of Church', signed with a monogram and dated 1914, oil on canvas, 80 x 58 cm, together with seven further works by the same or a similar hand (8) *From the Estate of Phillip Allen £150 - £200

182-200 Spare Lots



Collectable
Toys



201 Two Corgi models: 150 Vanwall Formula 1 Grand Prix and 406 Land Rover 109WB, both boxed £40 - £60



202 Fourteen loose Dinky military models including tanks, ambulances etc. (14) £40 - £60



203 Ten Dinky military models: 641 Army 1 ton cargo truck, 642 pressure refueler, 643 Army water tanker, 651 centurion tank, 661 recovery tractor, 670 armoured car, 676 armoured scout car, 677 armoured command vehicle, 689 medium artillery tractor and 697 25 pounder field gun, all boxed (10) £100 - £200

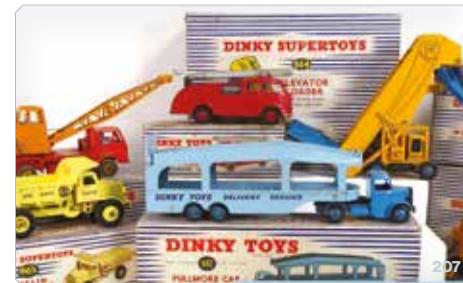


204 Three Dinky commercial models: 504 Foden 14 ton tanker, 942 Foden 14 ton tanker and 991 AEC tanker, all boxed (3) £100 - £200



205 Two Dinky commercial models: 501 Foden diesel 8 wheel wagon and 905 Foden flat truck, both boxed (2) £60 - £100

206 Four Dinky commercial models: 522 Big Bedford lorry, 532 Comet wagon, 533 Leyland cement wagon and 934 Leyland Octopus wagon, all boxed (4) £100 - £150



207 Eight Dinky commercial models: 965 Euclid read dump truck, 982 Pullmore car transporter and 994 loading ramps, 972 20 ton lorry mounted crane, 964 elevator loader, 971 Coles mobile crane x 2 and 955 fire engine, all boxed (7) £80 - £120



208 A group of loose Dinky and other commercial models including buses, SNFC delivery vehicle, flatbed trucks etc. (approx. 20) £30 - £50



209 A Dinky 715 Bristol 173 helicopter, boxed and four loose aeroplanes (5) £20 - £30



210 Four Dinky commercial models: 33C Miroitier Simca cargo, 283 BOAC coach, 290 double deck bus and 470 Austin van, all boxed, together with an empty 300 Massey-Harris tractor box (5) £40 - £60



211 Twenty-one loose Dinky and other sports and saloon cars including 236 Connaught, Hudson Sedan and others (21) £40 - £60

212 Nine Dinky racing cars: 107 Sunbeam Apline sports x 2, 109 Austin Healey 100 sports x 2, 110 Aston Martin DB3 sports x 2, 111 Triumph TR2 sports, 133 Cunningham C5R and 237 Mercedes Benz racing car, all boxed, together with an empty 111 Triumph TR2 box (10) £150 - £200

213 Six Dinky cars: 131 Cadillac tourer, 157 Jaguar XK120 coupe x 2, 162 Ford Zephyr saloon, 164 Vauxhall Cresta saloon and 181 Volkswagen, all boxed (6) £100 - £150

214 Nineteen loose Dinky, Crescent and other racing cars including Cooper-Bristol, Alfa Romeo and others (19) £60 - £100



215 Two Prameta clockwork Mercedes-Benz 300 models, both boxed (2) £80 - £120

216 A Schuco Studio 356 150 clockwork Mercedes racing car, boxed £30 - £50

217 A Crescent Toys 1284 Mercedes Benz 2.5l racing car, boxed £20 - £30

218 A Joustra 2002 clockwork car and a French Renault ambulance, both boxed (2) £30 - £50

219 A JEP clockwork racing boat, a Gama fire rescue and two further items of tinplate (4) £20 - £30

220 A Tri-ang military jeep, other military models, an RAF set and other accessories (qty) £20 - £30

221 A pair of Space Outlaw toy guns (2) £40 - £60

222 A Britains 2064 155mm gun, an Astra rocking gun and various other artillery models, some boxed (qty) £50 - £80

223 A group of cart metal and plastic figures including Lone Star cowboys and Indians, military models etc. (qty) £20 - £30

224 Ten Philip B Ducker 'Toydell' moulded and painted (?) plaster figures modelled as guardsmen, military figures and others, max h. 13.5 cm (10) £50 - £80

225 A scratch built and painted garage, 1.64 cm £20 - £30

226 Two trunks containing a large quantity of Meccano pieces including flats, cogs etc. (qty) £300 - £400



227 A collection of cast metal figures including Britains mounted equestrian examples, Scouts, Marines, kneeling guardsmen, farmyard models etc. (qty) £100 - £150

228 Five Journey puzzles comprising: 'Aero', 'Lucky Ringtail Cat', 'Golden Rod', 'Twirlywiry' and 'The Turnstile', together with a further selection of early 20th century and later games including Mah Jong, Tiddlyskittles, Tiddley Winks and others (qty) £80 - £120

229 A John Gilpin's Ride toy horse, boxed, together with instructions and a King Penguin book 'The Diverting History of John Gilpin' (3) £20 - £30

230 A Pelham 'blue giraffe' puppet, boxed £100 - £150

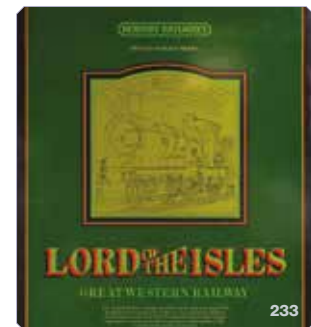
231 A Trix Twin Railway 788 elevator conveyor, boxed £20 - £30



232 Three Minic delivery vehicles and cars, a Dinky military model, a Dinky saloon car, four Matchbox models and a plastic Platitoy plane (qty) £50 - £80

233 A Hornby R548 OO gauge Lord of the Isle set, boxed £100 - £150

234 A Hornby Railways R685 OO gauge Inter-City 125 set, boxed £30 - £50



235 A Hornby R3215 OO gauge Eurostar set, boxed £80 - £120

236 A Tri-ang Railways RS52 OO gauge The Blue Pullman set, boxed £50 - £80

237 A Tri-ang Railways RS35 OO gauge goods set, boxed £100 - £150

238 A Bachmann Branch-Line OO gauge Bombardier Transportation Virgin Media set, boxed £80 - £120



248

239 A Jouef M752e OO gauge Orient Express set, boxed £80 - £120

240 A Hornby R2169 OO gauge BR 4-6-2 Merchant Navy class loco, boxed £60 - £100

241 A Hornby R3371 OO gauge LNER class Mallard loco, boxed £80 - £120

242 A Hornby R3311 OO gauge BR 4-4-0 Schools Class Westminster loco, boxed £60 - £100

243 A Hornby R3310 OO gauge BR West Country Bude loco, boxed £80 - £120

244 A Hornby Railways R041 OO gauge GWR pannier tank loco, boxed £30 - £50

245 A Hornby Railways R761 OO gauge GWR Kneller Hall loco, boxed £40 - £60

246 A Hornby Railways R552 BR 4-6-2 OO gauge Oliver Cromwell loco, boxed £50 - £80

247 A Tri-ang Hornby R855 BR 4-6-2 OO gauge Flying Scotsman loco, boxed £50 - £80

248 A Hornby OO gauge Princess Elizabeth loco and tender £40 - £60



239

249 A Hornby OO gauge diesel loco and a Hornby Railroad brake van (2) £40 - £60

250 A Hornby Dublo OO gauge Mallard loco and tender £40 - £60

251 An Armand Marseille bisque headed doll with sleeping brown glass eyes and open mouth showing four upper teeth, mould number 390, together with a composition doll and a stuffed dog (3) £30 - £50

252 - 299 Spare Lots



Ceramics & Glass



301



300



307



309

300 A Chelsea cabinet plate decorated with floral sprays, d. 23.5 cm, together with a similar octagonal plate and a further dish decorated with exotic birds (3) £300 - £400

301 Zachariah Boreman for Derby, a tea cup and saucer dish, a side plate and a covered sucrier, each decorated with an extensive landscape, plate d. 19.5 cm (4) £400 - £600

302 A Caughley water jug with mask spout, the body decorated with blue floral sprays, h. 19 cm, together with a similar trio (4) £100 - £150

303 A 19th century tea cup, tea bowl and saucer dish decorated with blue flowers within a gilt border, pseudo Meissen marks, saucer d. 13 cm, together with a blue and white tea bowl and saucer decorated in the Oriental manner (5) £30 - £50

304 An early Worcester tea cup and saucer dish, each decorated with an exotic bird with a blue and gilt swag border, saucer d. 13.5 cm (2) £50 - £80

305 Two early Worcester blue and white tea bowls and three saucer dishes, each decorated in the Oriental manner, saucer d. 12 cm (5) £50 - £80

306 A Champions Bristol chocolate cup and cover decorated with floral swags, h. 7 cm, together with a similar dish of shell form (2) £80 - £120

307 A Worcester tea bowl decorated in the 'Boys Buffalo' pattern, d. 7 cm £120 - £150

308 A 19th century tea cup and saucer dish, gilt decorated with a band of stylised blue flowers, saucer d. 14 cm (2) £30 - £50

309 A Chelsea tea bowl and saucer dish decorated with floral sprays on a turquoise ground, saucer d. 12.5 cm (2) £30 - £50



310

310 An early blue and white Worcester fruit bowl decorated with pagodas in the Oriental manner, d. 23.5 cm, together with six further items of blue and white Worcester (7) £150 - £200

311 A group of 18th century and later porcelain comprising two sparrow beak cream jugs, three further jugs, two tea bowls, four tea cups, a slops bowl, a side plate and a Chinese Export saucer dish (14) £80 - £120

312 A group of 19th century and later porcelain and ceramics including an Oriental style trio, New Hall style tea cups and other tea cups and saucers (37) £80 - £120

313 A group of 19th century tea bowls, tea cups and saucer dishes, each gilt decorated with the Regency manner, together with a similarly decorated slops bowl and sucrier (30) £80 - £120

314 A Derby trio decorated with foliate scrolls, saucer d. 13.5 cm, together with various other 19th century tea bowls, tea cups and saucer dishes (28) £80 - £120

315 A group of 19th century and later blue and white porcelain, mostly tea bowls, tea cups and saucers decorated in the Oriental manner (33) £80 - £120



319

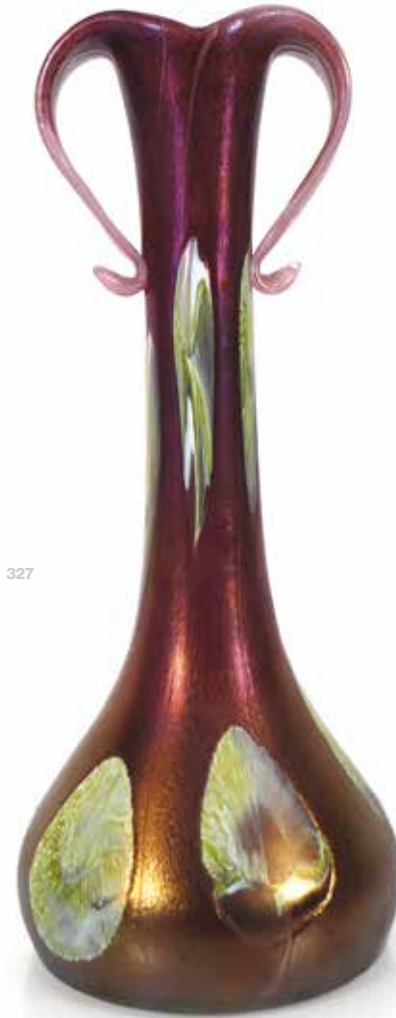
316 A Worcester blue and white coffee pot decorated in the Chinese manner, h. 17 cm, a Worcester blue and white cabinet plate and a blue and white tea pot of spherical form (3) £80 - £120

317 A pair of blue and white Copeland chargers decorated with views of Carnarvon and Conwy Castle, d. 40.5 cm (2) £40 - £60

318 Three 19th century drinking glasses of trumpet and thistle form, max h. 11.5 cm (3) £20 - £30

319 An air twist stem drinking glass of oversized proportions, h. 40.5 cm £40 - £60

327



324

320 A set of six rummers, each with a knopped stem, h. 15 cm, together with three further drinking glasses (9) £40 - £60

321 A group of twenty-six liqueur glasses of varying styles, max h. 12 cm (26) £30 - £50

322 A group of eleven liqueur glasses of flared and thistle form, max h. 11.5 cm (11) £30 - £50

323 A group of twenty-five drinking glasses of various styles, max h. 16 cm (25) £50 - £80

324 A pair of miniature Meissen figures modelled as a turkey and a peacock, max h. 6.5 cm (2) £100 - £150

325 Six blue and gilt decorated Staffordshire coffee cans and saucers, the cans each with a silver sleeve, together with a Meissen style nodding figure, h. 11 cm (13) £50 - £80

326 Four Royal Crown Derby paperweights modelled as a cat, a penguin, a pheasant and a rabbit, max h. 13.5 cm (4) £60 - £100

327 A Loetz two handled pink and opaline iridescent glass vase of flared Art Nouveau design, possibly designed by Robert Holubetz, h. 26.5 cm £1,000 - £1,500



328

328 A Bohemian green glass vase of goblet form decorated with a pair of putti within a gilt fern decorated ground, h. 26.5 cm £50 - £80

329 A pair of deep cranberry glass table lustres of typical form, h. 36 cm (2) £60 - £100

330 A Royal Doulton stoneware vase of cylindrical form, relief decorated with stylised birds, h. 37.5 cm £50 - £80

331 A Shorter & Sons shallow jardinière decorated in a pale green glaze, d. 25 cm £50 - £80



334



331

332 A Chinese sparrows beak cream jug decorated in coloured enamels with a vase of flowers, h. 19 cm, together with a blue and white dish, d. 14.5 cm (2) £40 - £60

333 Three items of Cantonese ceramics comprising a teapot, a vase and a covered container, max h. 25 cm £60 - £100

334 A Chinese Export mug of oversized proportions decorated with figures at leisure within blue and white segmented sections, h. 15.5 cm £40 - £60

335 A Chinese Export slab vase decorated in coloured enamels with figures at leisure within a rust ground, h. 28.5 cm £50 - £80



338

336 A Satsuma bowl of squat globular form typically decorated with geisha at leisure, h. 9.5 cm, together with a similarly decorated dish (2) £40 - £60

337 Two provincial Chinese blue and white ginger jars, max h. 12.5 cm (2) £30 - £50

338 A Japanese vase of shouldered form, decorated in coloured enamels with a butterfly amongst flowers in full bloom, character marks to base, h. 25 cm £60 - £100

339 - 350 Spare Lots



Silver & Coins



351 A set of six Danish silver and parcel gilt teaspoons and matching sugar tongs, each with an open coronet finial, W&S Sorensen, 2.9 ozs, cased £60 - £100

352 A George II silver mug with c-scroll handle, maker Edward Lothian, Edinburgh 1749, h. 9 cm, 6.5 ozs £100 - £150

353 A George II silver mug of typical form maker Richard Bayley, London 1745, h. 9 cm, 4.9 ozs £100 - £150

354 A Victorian silver and parcel gilt beaker with gadrooned decoration, maker WG JL, London 1891, h. 10 cm, 3.6 ozs £60 - £100

355 A set of six American silver foliate end dessert forks and six matching dessert spoons, together with six similar knives, weighable silver 17.7 ozs (18) £200 - £300

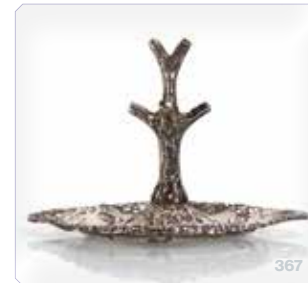
356 A mixed group of silver comprising five napkin rings, a sifting spoon, a tea scuttle, a Christening spoon, a caddy spoon, a pickle fork and three pairs of sugar nips, various dates and makers, overall 8.2 ozs (qty) £100 - £150

357 An Edwardian silver and repousse decorated tray of rectangular form, maker HM, Birmingham 1905, together with a pair of similar dishes, overall 11.4 ozs (3) £150 - £200

358 An early 20th century silver two handled basket of oval on four scrolled feet, W&R Sorley, Sheffield 1927, w. 32.5 cm, 18.2 ozs £250 - £300

359 An early 20th century silver dredger of typical form, maker RC, London 1936, h. 20.5 cm, 7.9 ozs £80 - £120

360 An Edwardian silver bowl raised on a socle foot, maker A&JZ, Birmingham 1908, h. 11 cm, 5.6 ozs £80 - £120



361 A pair of George II silver salts of oval form, each later decorated with foliate motifs on four splayed feet, makers mark indistinct, London 1743, w. 8.5 cm, together with a pair of later spoons, overall 9.3 ozs (4) £300 - £400

362 An Edwardian silver topped cut glass dressing table bottle of globular form, maker ACM Co., Birmingham 1901, h. 13 cm £20 - £30

363 A mixed group of silver comprising a 1902 Coronation anointing type spoon, a teaspoon and a pickle fork, each cased, together with two silver coin first day covers (5) £40 - £60

364 An Edwardian silver goblet of typical form, Mappin & Webb, Birmingham 1905, h. 14.5 cm and a miniature silver two handled trophy vase, overall 5.5 ozs, together with a silver ring box, a cased thimble and a Maria Theresa thaler (5) £80 - £120

365 A set of twelve Victorian silver fiddle pattern teaspoons, maker CB, London 1861, 8.7 ozs (12) £80 - £120

366 A mixed group of early 20th century and later silver and metalware comprising a pencil sleeve, an abalone inlaid pill box, a propelling pencil, three dress studs, a pair of tennis teaspoons, a filigree vesta case, a thimble and a magnifying glass, various dates and makers (qty) £60 - £100

367 A late Victorian silver ring tree of naturalistic form, Deakin & Francis, Birmingham 1900, h. 6.5 cm, 1.1 ozs £30 - £50

368 An early 20th century engine turned silver five piece dressing table set comprising a hand mirror and four brushes, maker RP, Birmingham 1932 (5) £50 - £80

369 A silver five piece cruet set of typical form maker S Ltd., Birmingham 1961, cased £60 - £100

370 A Victorian silver and foliate engraved dessert fork and spoon, George Adams, London 1873 and a pair of Victorian silver servers, maker JT, Birmingham 1860, both cased (2) £100 - £150

371 A set of six Edwardian silver gilt foliate handled teaspoons, a pair of matching sugar tongs and a sifting spoon, maker BHA, Birmingham 1906, together with three further similar sets of silver spoons, each cased (4 x cases) £100 - £150

372 An early 20th century silver two handled trophy vase of Art Deco design, makers mark indistinct, Birmingham 1930, h. 22 cm including ebonised base, 10.7 ozs £100 - £150

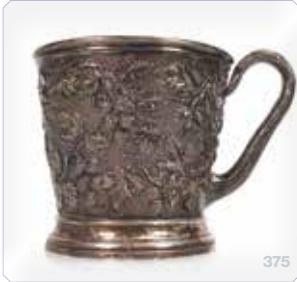
373 An early 20th century silver two handled trophy vase with leaf capped handles, maker BBS Ltd., Birmingham 1927, h. 26.5 cm including ebonised base, 13 ozs £150 - £200



380

374 An early 20th century silver two handled trophy vase with leaf capped handles, maker JD WD, Sheffield 1929, h. 24.5 cm including ebonised base, 11.9 ozs £120 - £150

375 A Victorian silver Christening mug, repousse decorated with vines of hops, John Samuel Hunt, London 1849, h. 8 cm, 61 ozs £120 - £150



375



383

376 A set of six silver apostle spoons, cased, a set of twelve silver teaspoons, a single silver teaspoon and a dressing table mirror, various dates and makers, weighable silver 71 ozs (qty) £80 - £120

377 A late 20th century silver two bottle wine trolley, supporting a pair of silver mounted oak wine coasters, maker R&D, London 1973, trolley 33.5 ozs, overall l. 47.5 cm £600 - £800

378 A late 20th century silver three piece cruet set, Reed & Barton and three silver spoons (6) £60 - £100

379 A pair of early 20th century silver fish servers, Viners, Sheffield 1931, max l. 29 cm, overall 7.6 ozs (2) £80 - £120

380 An early 20th century silver three piece tea service of boat shaped form, maker R&S, London 1915, overall 34.7 ozs (3) £400 - £500

381 A late 19th/early 20th century repousse decorated metalware handled parasol, l. 93.5 cm £60 - £100

382 A pair of Edwardian silver peppers, each on three outswept feet, maker WD, Birmingham 1905, h. 8 cm and a silver salt spoon, overall 2.6 ozs, together with a pair of silver plated grape scissors (4) £40 - £60

383 An early 20th century silver salver of circular form on four paw feet, Stewart Dawson Ltd., London 1914, d. 26 cm, 17.5 ozs £200 - £300

384 A William IV silver fiddle pattern serving spoon, maker WB, London 1832, l. 29 cm, 3.6 ozs £50 - £80



377



385 A pair of George III silver salts of squat bun shaped form, each on three hoof feet, makers marks indistinct, London 1785, d. 6.5 cm, together with a pair of later silver gilt salt spoons, overall 3.8 ozs (4) £60 - £100

386 An early 20th century silver salt of boat shaped form, maker J&RG, Chester 1912, w. 8.5 cm, a silver three piece cruet set and a pair of silver salts, Various dates and makers (6) £80 - £120

387 A set of six Edwardian silver teaspoons and a pair of matching sugar nips, maker ISG, Birmingham 1910 and a set of six silver clover ended teaspoons, both cases, together with five further silver teaspoons, various dates and makers (qty) £60 - £100

388 An Edwardian silver cigarette case of cushioned form, maker A&JZ, Birmingham 1901, w. 8.5 cm, together with a further silver engine turned cigarette case, overall 8.4 ozs (2) £80 - £120

389 A 9ct rose gold cufflink, Chester hallmarks and a part cufflink, overall 4 gms (2) £40 - £60

390 A George III silver caddy spoon with shell bowl, Peter & Anne Bateman, London 1794, l. 7.5 cm £40 - £60

391 A set of six Victorian silver fiddle and thread pattern tablespoons, maker SH DC, London 1846, 23.4 ozs (6) £250 - £300



392 A suite of fiddle and thread pattern flatware comprising: 6 x table forks, 6 x dessert forks and 6 x teaspoons, maker IL HL, London 1843, overall 39.7 ozs (18) £400 - £600

393 A set of six Victorian silver fiddle pattern table forks, maker JR, Sheffield 1890, 11.6 ozs (6) £120 - £150

394 Twelve Georgian and later silver fiddle and old English pattern table spoons, various dates and makers, overall 27.2 ozs (12) £300 - £400

395 Twenty-two William IV and later silver fiddle pattern dessert spoons, various dates and makers, overall 31.3 ozs (22) £350 - £450

396 A mixed group of silver comprising four fiddle pattern dessert forks, six fiddle pattern teaspoons, and six fiddle and thread pattern teaspoons, various dates and makers, overall 16 ozs £180 - £220



397 A set of six silver handled table knives and six matching butter knives, Viners, London 1964 (12) £40 - £60

398 A group of Victorian and later silver comprising two pairs of sugar nips, two caddy spoons and a sifting spoon, various dates and makers, overall 4.6 ozs (5) £50 - £80

399 A Dutch Export silver repousse decorated shoe, Chester import marks, l. 14.5 cm, 4.8 ozs £60 - £100

400 Spare Lot

401 Two glazed display cases containing a set of Danbury Mint 'Collectible Coins of America', comprising silver and other coins mounted to boards and under plastic, cased with certificates (2 x cases) £150 - £200

402 A Royal Mint 1937 fifteen coin specimen set, cased £100 - £150

403 A group of collectable coins including a 1977 silver crown, a 1972 silver crown, a Silver Jubilee medallion, a set of four Pobjoy Mint Silver Jubilee coins and two commemorative medallions, all cased (6 x cases) £30 - £50

404 A group of 18th century and later British and foreign coinage including Egyptian examples, cartwheel pennies, crowns etc. (qty) £200 - £300

405 A group of 18th century and later silver, part silver and copper coinage including crowns, pennies, three pence pieces etc. (qty) £80 - £120



406 A small group of coinage including Victorian and later half crowns, collectable crowns, two shillings, farthings, foreign coins, medallions etc. (qty) £40 - £60

407 A group of collectable coins including a First World War Guernsey silver £5 crown, a William & Kate Diamond Jubilee tour set, other coins commemorating the British monarchy, crowns, military examples etc., some boxed (qty) £80 - £120

408 A group of Victorian and later British silver coinage including half crowns, florins, sixpences etc, overall 18.3 ozs (all pre-1920) (qty) £200 - £300

409 A group of British part silver coinage including half crowns, shillings, six pences etc., overall 51.8 ozs (all 1920-1946) (qty) £300 - £400

410 A group of Edwardian and later British coinage including pennies, shillings, three pences, half crowns etc., together with a Royal Mint silver commemorative crown and others (qty) £80 - £120

HAMMER PRICES - APRIL 2024

1	£75	52	£85	95	£90	133	£110	171	£160	224	£65	293	£50
2	£160	53	£60	96	£30	134	£300	172	£120	225	£20	294	£50
3	£140	54	£50	97	£22	135	£65	173	£85	226	£30	295	£85
4	£380	55	£60	98	£55	136	£40	174	£260	227	£55	296	£39
5	£170	56	£30	99	£30	137	£80	176	£24	229	£420	297	£110
6	£420	57	£65	100	£110	138	£90	177	£180	232	£70	298	£140
8	£60	58	£45	101	£220	139	£85	178	£50	233	£100	300	£40
9	£200	59	£110	102	£50	140	£65	179	£130	235	£200	301	£20
10	£70	60	£22	103	£20	141	£50	180	£140	236	£75	302	£40
11	£50	61	£55	104	£90	142	£600	181	£280	237	£20	303	£200
12	£75	62	£80	105	£300	143	£70	182	£110	239	£20	304	£80
13	£85	63	£160	107	£40	144	£150	183	£550	240	£120	305	£28
14	£75	65	£150	108	£40	146	£45	184	£40	241	£75	306	£140
15	£340	68	£35	109	£28	147	£400	185	£260	243	£50	307	£200
16	£260	69	£130	110	£65	148	£420	186	£280	245	£220	308	£80
18	£80	70	£65	111	£75	149	£160	187	£130	246	£40	309	£130
19	£190	71	£80	112	£45	150	£50	189	£50	247	£65	310	£150
20	£260	72	£30	113	£30	151	£140	190	£110	248	£20	321	£70
23	£160	73	£150	114	£100	152	£440	201	£22	249	£120	323	£80
24	£300	75	£20	115	£40	153	£50	202	£50	250	£150	324	£20
26	£130	77	£40	116	£22	154	£35	203	£26	251	£75	325	£300
27	£300	78	£45	117	£30	156	£20	204	£70	252	£200	326	£75
30	£440	79	£50	118	£24	157	£650	205	£70	253	£420	327	£40
38	£300	80	£170	119	£110	158	£1800	207	£30	257	£50	328	£140
40	£200	81	£26	120	£28	159	£240	208	£45	258	£45	329	£150
41	£110	82	£55	121	£60	160	£30	209	£60	271	£80	330	£90
42	£60	83	£24	122	£190	161	£110	210	£170	272	£10	351	£820
43	£60	84	£100	123	£190	163	£155	212	£65	273	£155	352	£60
45	£200	87	£1000	124	£100	164	£260	213	£45	274	£40	353	£110
46	£75	88	£40	125	£50	165	£280	214	£110	276	£30	354	£70
47	£55	89	£360	126	£50	166	£120	217	£20	277	£45	355	£70
48	£40	90	£320	129	£35	167	£55	219	£30	279	£50	356	£80
49	£85	91	£260	130	£70	168	£50	220	£30	280	£200	357	£85
50	£120	92	£80	131	£85	169	£110	222	£70	290	£55	358	£40
51	£50	94	£90	132	£40	170	£24	223	£20	291	£20	359	£75

360	£95	397	£100	452	£12	518	£80	572	£50
361	£280	398	£130	454	£100	520	£200	573	£55
362	£180	399	£10	455	£30	521	£60	574	£60
363	£90	400	£150	456	£55	522	£55	575	£70
364	£45	401	£260	457	£20	523	£10	576	£70
365	£50	402	£300	458	£16	524	£60	577	£26
366	£90	403	£40	460	£80	525	£140	578	£20
367	£30	404	£120	461	£65	526	£90	579	£170
368	£100	405	£100	462	£75	527	£85	580	£55
369	£50	406	£45	465	£30	528	£24	581	£30
370	£80	407	£70	466	£800	529	£70	582	£100
371	£20	408	£100	467	£55	530	£340	583	£26
372	£540	409	£190	468	£480	531	£680	585	£60
373	£22	410	£180	469	£85	532	£280	586	£60
374	£420	411	£120	470	£100	533	£100	589	£65
375	£200	412	£85	471	£190	534	£120	590	£40
376	£280	413	£24	472	£70	535	£150	591	£70
377	£170	414	£150	473	£130	536	£440	592	£30
378	£85	415	£190	474	£65	552	£50	593	£45
379	£65	416	£150	475	£70	553	£95	594	£45
380	£90	417	£240	501	£2900	554	£170	595	£20
381	£55	418	£80	502	£700	555	£320	596	£20
382	£110	419	£1000	503	£1350	556	£160	597	£45
383	£110	420	£130	504	£350	557	£30	598	£35
384	£65	421	£420	505	£2700	558	£200	599	£240
385	£40	422	£65	506	£680	559	£60	600	£85
386	£55	423	£180	507	£650	561	£80	601	£28
387	£160	424	£130	508	£350	562	£40	602	£30
388	£18	425	£110	509	£350	563	£80	603	£50
389	£22	426	£80	510	£1650	564	£180	604	£20
390	£50	427	£26	511	£1230	565	£240	605	£40
391	£120	428	£110	512	£2600	566	£100	606	£55
392	£100	429	£220	513	£620	567	£70	607	£30
393	£75	430	£150	514	£640	568	£65		
394	£160	431	£170	515	£150	569	£140		
395	£50	432	£200	516	£200	570	£80		
396	£70	451	£26	517	£80	571	£95		



AUCTIONEERS

W&H PEACOCK
AUCTIONEERS & VALUERS

Mid Century Design

TO BE SOLD BY AUCTION

Friday 17th May 2024 Commencing 10.30am

Viewing: Viewing: Friday prior – 9am to 8pm, Saturday prior – 9am to 5pm,
Thursday prior – 9am to 5pm, morning of sale from 9am

Mid Century classic designed furniture and collectables have proved to be very popular with buyers looking for something out of the ordinary to furnish their homes. Our contemporary sales are jam-packed with British, Scandinavian and American designs by 'outside of the box' thinkers of the 1950s through to present day.

FORTHCOMING SALES ENTRIES INVITED

Bedford Auction Centre

Wallis Way, Bedford, Bedfordshire, MK42 0PE
01234 266 366 or design@peacockauction.co.uk

peacockauction.co.uk